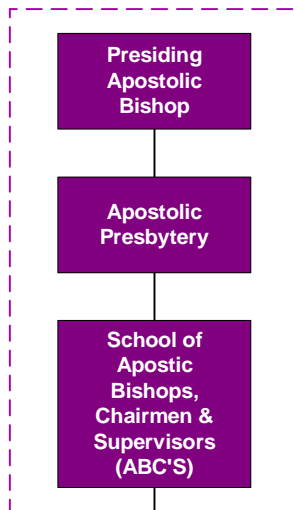


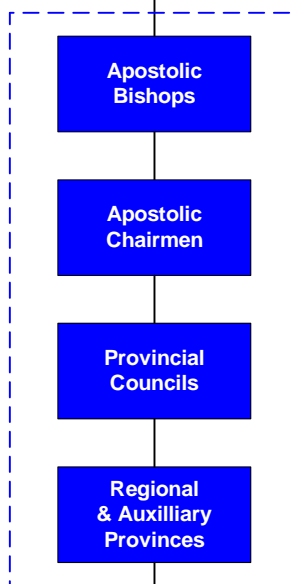
Embassy International Fellowship Apostolic Hierarchal Structure



The **Presiding Apostolic Bishop (PAB)** is the presiding prelate of Embassy International Fellowship of Churches (EIF) and acts as the head of the Apostolic Presbytery and the School of Apostolic Bishops, Chairs & Supervisors.

The **Apostolic Presbytery** as the EIF Core Council of Apostles is responsible for general supervision of the fellowship and ecclesiastical and administrative oversight and support to EIF apostolic leadership. The Apostolic Presbytery operates as an extension of the office of the PAB to ensure the full maturation, equipping and effectiveness of the leadership as apostolic functionaries.

The **School of Apostolic Bishops, Chairmen and Supervisors (ABC'S)** is the EIF ecclesiastical apostolic training center and represents the collective body of apostolic government exercising vertical responsibility for provinces and colonies. ***Prior to ascension into the official office of Bishop, Chairman or Supervisor while an apostle's work within a colony or province is being proved, he/she will operate as an Administrative Assistant to the PAB.***



An **Apostolic Bishop (AB)** is the jurisdictional prelate responsible for ecclesiastical oversight of a regional or auxiliary province and acts as a direct ambassador of the PAB to that province.

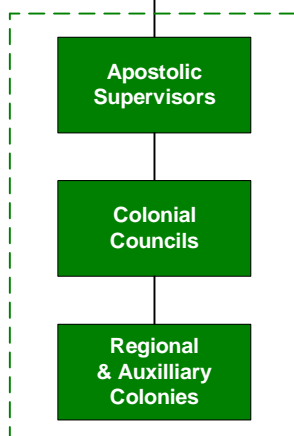
An **Apostolic Chairman (AC)** is the jurisdictional chief operating officer responsible for administrative and business operations within the province and serves ecclesiastically as Assistant Apostolic Bishop.

A **Provincial Council** is the body of five-fold functionaries within a province, including its administrative government, which helps to train, establish, support and oversee holistic five-fold ministry operation.

A **Regional Province** is a geographical region of churches, organizations and functionaries mobilized and assembled directly by EIF.

An **Auxiliary Province** is a work originally established outside EIF without regard to geography that joined EIF through covenant relationship and contains fifteen (15) or more churches (*as a general standard*).

** Final size qualification left to the discretion of the PAB.*



An **Apostolic Supervisor (AS)** is responsible for ecclesiastical oversight and development of a regional or auxiliary colony and acts as an ambassador of the PAB to that colony, fully supported in function by an Apostolic Bishop.

A **Colonial Council** is the body of five-fold functionaries within a province, including its administrative government, which helps to train, establish, support and oversee holistic five-fold ministry operation.

A **Regional Colony** is a geographical district of churches, organizations and functionaries mobilized and assembled directly by EIF.

An **Auxiliary Colony** is a work originally established outside EIF without regard to geography that joined EIF through covenant relationship and contains at least three (3) churches.